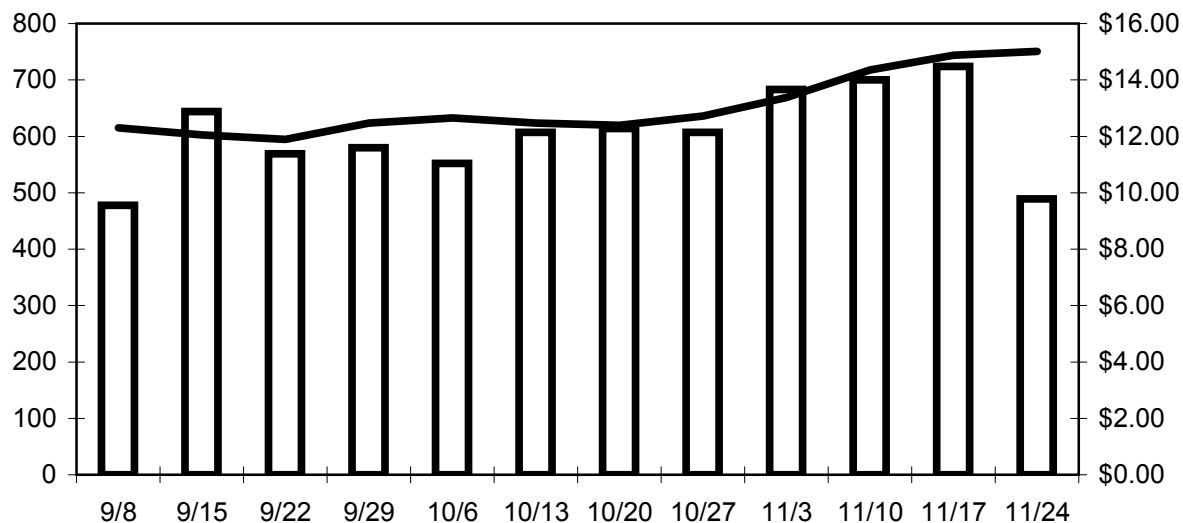


## Fresh Russet Potato Market Report

Week Ending: 11/24/2007

State	FWA	Chg	GRI	Chg	70ct	Chg	10# Film	Chg
Idaho Burbank	\$15.01	0.14	\$6.64	0.08	\$21.25	0.50	\$11.75	0.25
Idaho Norkotah	\$14.80	0.17	\$7.58	0.13	\$20.00	0.38	\$11.75	0.13
Colorado	\$13.13	0.00	\$7.56	0.00	\$16.00	0.00	\$12.00	0.00
Columbia Basin	\$13.82	0.29	\$6.24	0.18	\$18.00	1.00	\$10.50	-0.25
Wisconsin	\$12.74	0.51	\$6.88	0.41	\$17.00	1.17	\$11.50	0.56

Shipments (000 Cwt)
  Idaho FWA



**Market Commentary:** Price continued to advance as shipments dropped off during the Thanksgiving shortened week.

Sources: North American Potato Market News and USDA Agricultural Marketing Service

Notes: Prices are weekly averages of daily prices. All prices are in \$/per cwt. FWA is a weighted average of shipping point prices for common packs in each area. Weights differ by area. GRI is the Grower Returns Index for each individual area. Idaho GRIs are based on a 60% packout for Burbanks and a 75% packout for Norkotahs.